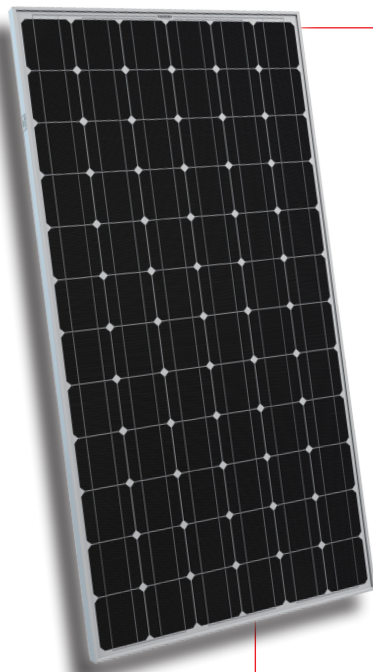


STP200S - 24/Ad+ STP195S - 24/Ad+



200 Watt MONOCRYSTALLINE SOLAR MODULE



Features



High module conversion efficiency

15.7%

Module efficiency up to 15.7% achieved through advanced cell technology and manufacturing capabilities



Self-cleaning & anti-reflective

Higher module efficiency from anti-reflective, hydrophobic layer with higher light absorption and minimal surface dust



Positive tolerance

0/+5%

Guaranteed positive tolerance of 5% delivers higher outputs reliably



Excellent weak light performance

Excellent performance under low light conditions



Extended wind and snow load tests

3800Pa
5400Pa

Module certified to withstand extreme wind (3800 Pascal) and snow loads (5400 Pascal) *



Suntech current sorting process

2%

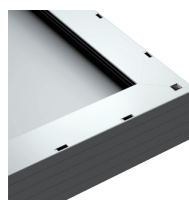
System output maximized by reducing mismatch losses up to 2% with modules sorted & packaged by amperage

Certifications and standards:
IEC, CE, PV Cycle, PCII, MCS



Trust Suntech to Deliver Reliable Performance Over Time

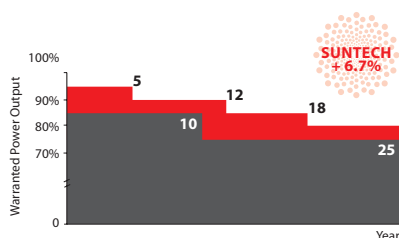
- World's No.1 manufacturer of crystalline silicon photovoltaic modules
- Unrivaled manufacturing capacity and world-class technology
- Rigorous quality control meeting the highest international standards: ISO 9001: 2008, ISO 14001: 2004 and ISO17025: 2005
- Tested for harsh environments (salt mist and ammonia corrosion testing: IEC 61701, DIN 50916:1985 T2)**



Superior Frame Design

Specially designed drainage holes and rigid construction prevent frames from deforming. Screwless frame design for a long term durability.

Industry-leading Warranty based on Pnom



- Based on nominal power (Pnom)
- 25-year transferrable power output warranty: 5 years/95%, 12 years/90%, 18 years/85%, 25 years/80% ***
- Warrants 6.7% more than the market standard over 25 years
- 10-year material and workmanship warranty

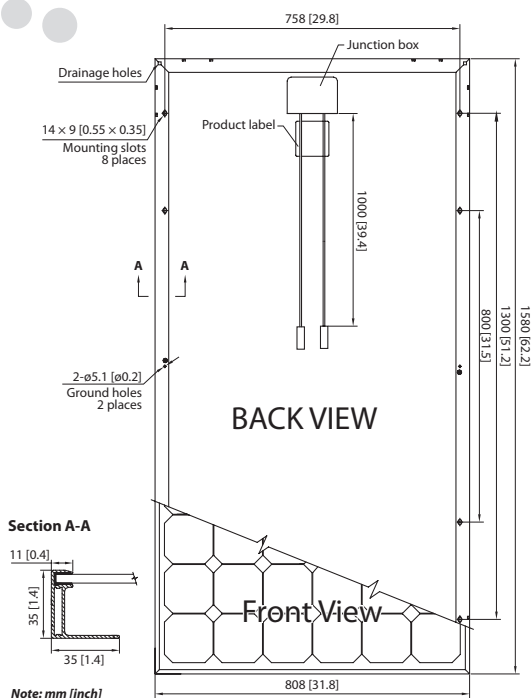


Most modern IP67 Rated Junction Box

Supports installations in multiple orientation. High performance, low resistance connectors ensure maximum output for highest energy production.

* Please refer to Suntech Standard Module Installation Manual for details. ** Please refer to Suntech Product Near-coast Installation Manual for details.
*** Please refer to Suntech Product Warranty for details.

STP200S - 24/Ad+ STP195S - 24/Ad+



Electrical Characteristics

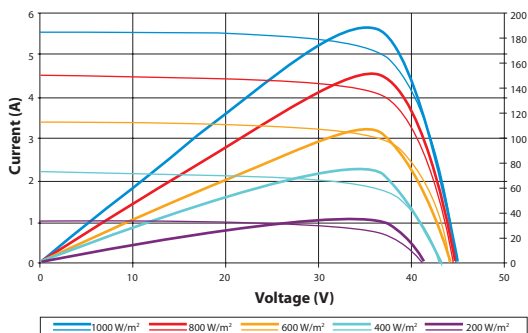
| STC | STP200S-24/Ad+ | STP195S-24/Ad+ |
|---------------------------------|------------------|----------------|
| Optimum Operating Voltage (Vmp) | 36.8 V | 36.6 V |
| Optimum Operating Current (Imp) | 5.45 A | 5.33 A |
| Open Circuit Voltage (Voc) | 45.5 V | 45.4 V |
| Short Circuit Current (Isc) | 5.81 A | 5.69 A |
| Maximum Power at STC (Pmax) | 200 W | 195 W |
| Module Efficiency | 15.7% | 15.3% |
| Operating Module Temperature | -40 °C to +85 °C | |
| Maximum System Voltage | 1000 V DC (IEC) | |
| Maximum Series Fuse Rating | 15 A | |
| Power Tolerance | 0/+5 % | |

STC: Irradiance 1000 W/m², module temperature 25 °C, AM=1.5;
Best in Class AAA solar simulator (IEC 60904-9) used, power measurement uncertainty is within +/- 3%

| NOCT | STP200S-24/Ad+ | STP195S-24/Ad+ |
|---------------------------------|----------------|----------------|
| Maximum Power at NOCT (Pmax) | 145 W | 142 W |
| Optimum Operating Voltage (Vmp) | 33.2 V | 33.2 V |
| Optimum Operating Current (Imp) | 4.37 A | 4.27 A |
| Open Circuit Voltage (Voc) | 42.2 V | 41.8 V |
| Short Circuit Current (Isc) | 4.68 A | 4.61 A |

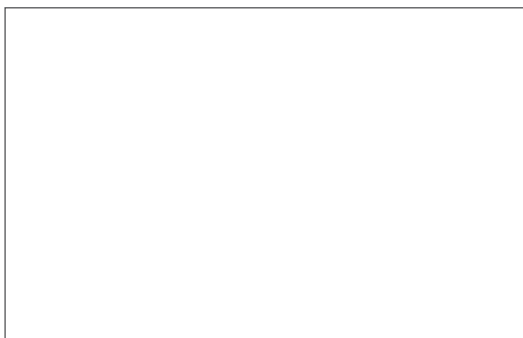
NOCT: Irradiance 800 W/m², ambient temperature 20 °C, AM=1.5, wind speed 1 m/s;
Best in Class AAA solar simulator (IEC 60904-9) used, power measurement uncertainty is within +/- 3%

Current-Voltage & Power-Voltage Curve (195S-24)



Excellent performance under weak light conditions: at an irradiation intensity of 200 W/m² (AM 1.5, 25 °C), 95.5% or higher of the STC efficiency (1000 W/m²) is achieved

Dealer information



Specifications are subject to change without further notification

Temperature Characteristics

| | |
|---|------------|
| Nominal Operating Cell Temperature (NOCT) | 45±2°C |
| Temperature Coefficient of Pmax | -0.45 %/°C |
| Temperature Coefficient of Voc | -0.34 %/°C |
| Temperature Coefficient of Isc | 0.050 %/°C |

Mechanical Characteristics

| | |
|---------------|---|
| Solar Cell | Monocrystalline silicon 125 × 125 mm (5 inches) |
| No. of Cells | 72 (6 × 12) |
| Dimensions | 1580 × 808 × 35mm (62.2 × 31.8 × 1.4 inches) |
| Weight | 15.5 kgs (34.1 lbs.) |
| Front Glass | 3.2 mm (0.13 inches) tempered glass |
| Frame | Anodized aluminium alloy |
| Junction Box | IP67 rated (3 bypass diodes) |
| Output Cables | TUV (2Pfg1 169:2007), UL 4703 4.0 mm ² (0.006 inches ²), symmetrical lengths (-) 1000mm (39.4 inches) and (+) 1000 mm (39.4 inches) |
| Connectors | MC4 connectors |

Packing Configuration

| Container | 20' GP | 40' GP |
|-----------------------|--------|--------|
| Pieces per pallet | 26 | 26 |
| Pallets per container | 12 | 28 |
| Pieces per container | 312 | 728 |